

14. Monsters



MEASUREMENT

Approx 6 ins [15 cm] tall, excluding legs, ears, eyes.

MATERIALS



Bernat® Handicrafter Cotton (50 g/1.75 oz; 73 m/80 yds)		
<p>Blue Monster</p>	<p>Contrast A 13111 Mod Blue: 3 balls</p>	<p>Contrast B 00001 White: 1 ball</p>
<p>Pink Monster</p>	<p>Contrast A 13444 Mod Pink: 3 balls</p>	<p>Contrast B 00001 White: 1 ball</p>
<p>Orange Monster</p>	<p>Contrast A 13699 Tangerine: 3 balls</p>	<p>Contrast B 00001 White: 1 ball</p>
<p>Green Monster</p>	<p>Contrast A 13712 Hot Green: 3 balls</p>	<p>Contrast B 00001 White: 1 ball</p>
<p>Size 3.75 mm (U.S. F or 5) crochet hook or size needed to obtain gauge. Stuffing. Black yarn for embroidery. White piece of felt for eyes and teeth. White sewing thread.</p>		

STITCH GLOSSARY

Approx = Approximately.

Beg = Beginning.

Ch(s) = Chain(s).

Dc = Double crochet.

Hdc = Half double crochet.

Rem = Remaining.

Rep = Repeat.

Rnd(s) = Round(s).

RS = Right side.

Sc = Single crochet.

Sl st = Slip stitch.

St(s) = Stitch(es).

Tr = Treble crochet.

Yoh = Yarn over hook.

GAUGE

15 sc and 16 rows = 4 ins [10 cm].

INSTRUCTIONS

Monster Body

With A, ch 2.

1st rnd: 6 sc in 2nd ch from hook. Join with sl st to first sc.

2nd rnd: Ch 1. 2 sc in each sc around. Join with sl st to first sc. 12 sc.

3rd rnd: Ch 1. *1 sc in next sc. 2 sc in next sc. Rep from * around. Join with sl st to first sc. 18 sc.

4th rnd: Ch 1. *1 sc in each of next 2 sc. 2 sc in next sc. Rep from * around. Join with sl st to first sc. 24 sc.

5th rnd: Ch 1. *1 sc in each of next 3 sc. 2 sc in next sc. Rep from * around. Join with sl st to first sc. 30 sc.

6th rnd: Ch 1. *1 sc in each of next 4 sc. 2 sc in next sc. Rep from * around. Join with sl st to first sc. 36 sc.

7th rnd: Ch 1. *1 sc in each of next 5 sc. 2 sc in next sc. Rep from * around. Join with sl st to first sc. 42 sc.

8th rnd: Ch 1. *1 sc in each of next 6 sc. 2 sc in next sc. Rep from * around. Join with sl st to first sc. 48 sc.

9th rnd: Ch 1. 1 sc in each sc around. Join with sl st to first sc.

10th rnd: Ch 1. *1 sc in each of next 7 sc. 2 sc in next sc. Rep from * around. Join with sl st to first sc. 54 sc.

11th rnd: As 9th rnd.

12th rnd: Ch 1. *1 sc in each of next 8 sc. 2 sc in next sc. Rep from * around. Join with sl st to first sc. 60 sc.

13th to 23rd rnds: As 9th rnd.

24th rnd: Ch 1. *1 sc in each of next 8 sc. Draw up a loop in each of next 2 sc. Yoh and draw through 2 loops on hook – sc2tog made. Rep from * around. Join with sl st to first sc. 54 sts.

25th rnd: As 9th rnd

26th rnd: Ch 1. *1 sc in each of next 7 sc. Sc2tog over next 2 sts. Rep from * around. Join with sl st to first sc. 48 sts.

27th rnd: As 9th rnd.

28th rnd: Ch 1. *1 sc in each of next 6 sc. Sc2tog over next 2 sts. Rep from * around. Join with sl st to first sc. 42 sts.

29th rnd: Ch 1. *1 sc in each of next 5 sc. Sc2tog over next 2 sts. Rep from * around. Join with sl st to first sc. 36 sts.

30th rnd: Ch 1. *1 sc in each of next 4 sc. Sc2tog over next 2 sts. Rep from * around. Join with sl st to first sc. 30 sts.

Stuff Body.

31st rnd: Ch 1. *1 sc in each of next 3 sc. Sc2tog over next 2 sts. Rep from * around. Join with sl st to first sc. 24 sts.

32nd rnd: Ch 1. *1 sc in each of next 2 sc. Sc2tog over next 2 sts. Rep from * around. Join with sl st to first sc. 18 sts.

33rd rnd: Ch 1. *1 sc in next sc. Sc2tog over next 2 sts. Rep from * around. Join with sl st to first sc. 12 sts.

34th rnd: Ch 1. *Sc2tog over next 2 sts. Rep from * around. Join with sl st to first sc. 6 sts. Break yarn, leaving a long end. Thread end through rem sts and pull tightly. Fasten securely.

Legs (make 2).

With A, ch 10. Join with sl st to first sc to form a ring.

1st rnd: Ch 1. 1 sc in each ch around. Join B with sl st to first sc.

2nd rnd: With B, ch 1. 1 sc in each sc around. Join A with sl st to first sc.

3rd rnd: With A, ch 1. 1 sc in each sc around. Join B with sl st to first sc.

4th rnd: As 2nd rnd.

5th rnd: With A, ch 1. 1 sc in each of next 2 sc. 1 hdc in next sc. 2 hdc in next sc. 3 dc in each of next 2 sc. 2 hdc in next sc. 1 hdc in next sc. 1 sc in each of next 2 sc. Join B with sl st to first sc. 16 sts.

Next rnd: Working in back loops only, with B, ch 2 (does not count as st). 1 hdc in each st around. Join with sl st to first hdc.

Next rnd: Ch 1. Working in back loops only, (Sc2tog over next 2 sts) twice. 1 sc in each of next 7 sts. (Sc2tog over next 2 sts) twice. 1 sc in next st. Join with sl st to first st.

Stuff Leg.

Next rnd: Ch 1. Working in **both** loops only, (Sc2tog over next 2 sts) twice. 1 sc in each of next 3 sts. (Sc2tog over next 2 sts) twice. 1 sc in next st. Join with sl st to first st.

Next rnd: Ch 1. Sc2tog over next 2 sts. 1 sc in each of next 3 sts. Sc2tog over next 2 sts. 1 sc in next st. Join with sl st to first st. Fasten off.

Sew bottom seam.

BLUE MONSTER

Ears (make 2).

With A, ch 10. Join with sl st to first sc to form a ring.

1st rnd: Ch 1. 1 sc in each ch around. Join B with sl st to first sc.

2nd rnd: With B, ch 1. 1 sc in each sc around. Join A with sl st to first sc.

3rd rnd: With A, ch 1. 1 sc in each sc around. Join B with sl st to first sc.

4th rnd: As 2nd rnd.

5th rnd: With A, ch 1. 1 sc in each of next 2 sc. 1 hdc in next sc. 2 hdc in next sc. 3 dc in each of next 2 sc. 2 hdc in next sc. 1 hdc in next sc. 1 sc in each of next 2 sc. Join B with sl st to first sc. 16 sts.

6th rnd: With B, ch 1. *1 sc in each of next 2 sts. 2 sc in next st. Rep from * to last st. 1 sc in last st. Join A with sl st to first sc. 21 sts.

7th rnd: With A, ch 1. (1 sc in each of next 2 sc. 2 sc in next sc) twice. 1 hdc in each of next 2 sc. 2 dc in next sc. 2 tr in each of next 3 sc. 2 dc in next sc. 1 hdc in each of next 2 sc. (2 sc in next sc. 1 sc in each of next 2 sc) twice. Join with sl st to first sc. Fasten off.

Sew Ears and Legs in position.

With white felt cut out eyes and moustache (see Diagrams on page 40). Gather moustache at center and sew in position. With sewing thread, sew Eyes in position. With black yarn, embroider Eyes using satin stitch.

PINK MONSTER

Eyes (make 3).

With A, ch 14. Join with sl st to first sc to form a ring.

1st rnd: Ch 1. 1 sc in each ch around. Join with sl st to first sc. 14 sc.

2nd rnd: Ch 1. 1 sc in each sc around. Join with sl st to first sc.

3rd rnd: Ch 1. (Sc2tog over next 2 sc. 1 sc in each of next 2 sc) 3 times. Sc2tog over next 2 sc. Join with sl st to first st. 10 sts.

4th rnd: Ch 1. 1 sc in each st around. Join with sl st to first sc.

Rep last rnd 8 times more.

Next rnd: Ch 1. (1 sc in next sc. 2 sc in next sc) 5 times. Join with sl st to first sc. 15 sc.

Next rnd: Ch 1. (1 sc in each of next 2 sc. 2 sc in next sc) 5 times. Join with sl st to first sc. 20 sc.

Next rnd: Ch 1. 1 sc in each sc around. Join with sl st to first sc.

Rep last rnd 3 times more.

Next rnd: Ch 1. (1 sc in each of next 2 sc. Sc2tog over next 2 sts) 5 times. Join with sl st to first sc. 15 sc.

Next rnd: Ch 1. (1 sc in next sc. Sc2tog over next 2 sts) 5 times. Join with sl st to first sc. 10 sc.

Next rnd: Ch 1. (Sc2tog over next 2 sts) 5 times. Join with sl st to first sc. 5 sc. Fasten off. Break A, leaving a long end. Thread end through rem sts. Pull tightly and fasten securely.

Stuff eyes. Sew Eyes and Legs in position (see picture). Cut out circles with white felt. Sew in position with sewing thread. With black yarn embroider eyes, using satin stitch and straight stitch for eyelashes.

Using Diagram on page 40, cut out teeth with white felt. Bend in arch and sew in position with sewing thread.

ORANGE MONSTER

Ears (make 2).

With A, ch 10.

1st row: (RS). 1 sc in 2nd ch from hook. 1 sc in each ch to end of ch. Turn. 9 sc.

2nd row: Ch 1. 1 sc in each st to end of row. Turn.

3rd row: Ch 1. 2 sc in first sc. 1 sc in each sc to last sc. 2 sc in last sc. Turn.

Rep last 2 rows twice more. 15 sc.

Next 3 rows: Ch 1. 1 sc in each sc to end of row. Turn.

Next row: (RS). Ch 1. Sc2tog over first 2 sc. 1 sc in each sc to last 2 sts. Sc2tog over last 2 sc. Turn.

Next row: Ch 1. 1 sc in each st to end of row. Turn.

Rep last 2 rows until 5 sts rem. Fasten off.

Fringe: Cut B 2 ins [5 cm] long. Taking 1 strand for each fringe knot into fringe around ear avoiding foundation chain and spacing fringe evenly between knots. Trim fringe evenly.

Pleat Ear along foundation chain and sew in position (see picture). Sew Legs in position.

Cut out circles with white felt (see Diagram on page 40). With black yarn, embroider eyes using satin stitch. Sew in position with sewing thread.

Using Diagram on page 40, cut out teeth with white felt. Sew in position with sewing thread.

GREEN MONSTER

Ears (make 2).

With A, ch 10.

1st row: (RS). 1 sc in 2nd ch from hook. 1 sc in each ch to end of ch. Turn. 9 sc.

2nd row: Ch 1. 1 sc in each st to end of row. Turn.

Rep last row 3 times more.

Next row: Ch 4 (counts as dc and ch 1).

(1 dc. Ch 3. Sl st in top of dc – picot made.


Ch 1) twice in same sp as sl st. *(1 dc. Picot.

1 dc) 3 times in next sc. Rep from * around.

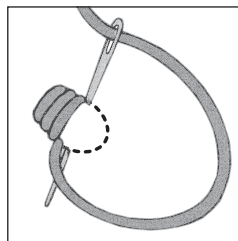
Join with sl st to 3rd ch of ch 4. Fasten off.

Sew Ears and Legs in position.

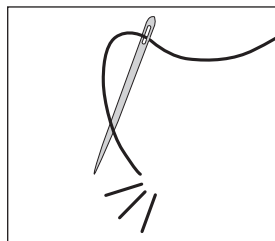
Cut out circle with white felt (see Diagram on page 40). With black yarn embroider eye, using satin stitch. Sew in position with sewing thread.

Using Diagram on page 40, cut out teeth with white felt. Sew in position with sewing thread. 

Satin Stitch



Straight Stitch



Moustache: Blue Monster

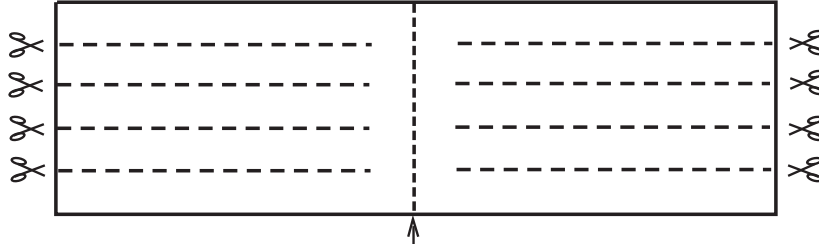


Diagram: Pink Monster

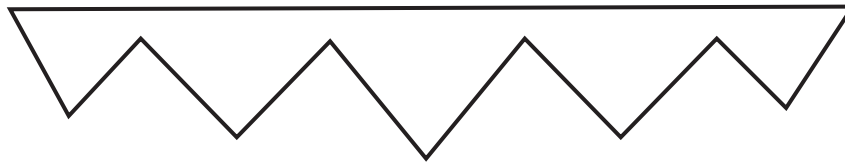


Diagram: Orange Monster

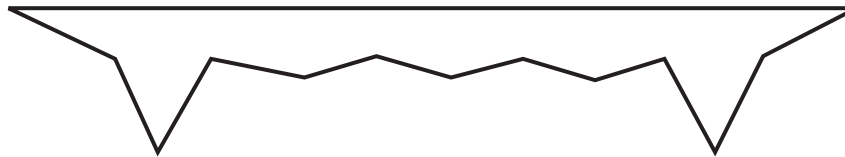
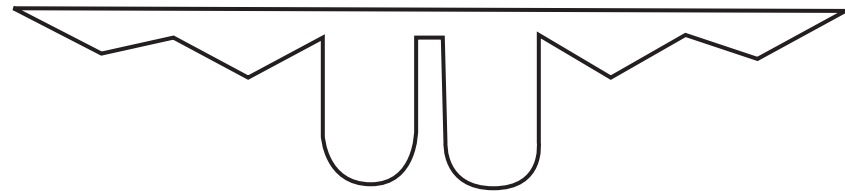


Diagram: Green Monster



Eye Diagrams

